



An Roinn Talmhaíochta,
Bia agus Mara
Department of Agriculture,
Food and the Marine

Terms & Conditions

Lough Carra LIFE Results-Based Payment Scheme (RBPS)
2023



LIFE20 NAT/IE/000172



Contact Details

Lough Carra LIFE Project Office,
Belcarra Community Centre, Belcarra, Co Mayo, F23 HY58.
www.loughcarralife.ie

Project Manager: Kieran Flynn
Phone: 094 906 4964
Email: kflynn@mayococo.ie

Project Farm Advisor; Siobhan Ward
Phone: 087 9193371
Email: siobhanward2000@yahoo.co.uk

Dept of Agriculture Liaison: Leanne Roche
Phone: 053 917 0392
Email: leanne.roche@agriculture.gov.ie



Preface

Lough Carra LIFE is a five-year project led by Mayo County Council which will work towards improving ecosystem resilience and reducing nutrient inputs into Lough Carra, one of Europe's premier Marl Lake habitats. The project will take place in the Lough Carra catchment, Co. Mayo, and will work with farmers, other landowners, and local community groups, to achieve the project aims.

Lough Carra LIFE is a broad spectrum multi-faceted project which aims to improve the water quality of the lake, restore the Marl Lake habitat, and raise the conservation status of other habitats and species within the catchment area. Six Project Partners are responsible for delivering on 43 Project Actions over a 5-year period. These actions span across multiple sectors including farming, forestry, habitat restoration, community engagement, and research.

The Lough Carra LIFE Project has received funding from the European Union's LIFE programme under **Grant Agreement No. LIFE20 NAT/IE/000172**.

One of the key project actions is the development and administration of a pilot Results Based Agri-environment Payments Scheme (RBPS), specifically adapted for farmers in the Lough Carra catchment. The scheme will be designed in consultation with local farmers, to ensure



that it is locally adapted, practical, and results focused, as well as properly and fairly funded.

This Terms and Conditions document sets out the detail under which the RBPS programme will be run, however, the project team will monitor its progress and do have the flexibility to adapt and innovate as challenges arise.

It is hoped that this programme will inform the formulation of future agri-environmental schemes in this area. As such it presents an opportunity for farmers to be involved in developing policy that could provide long term environmental and economic benefits to their communities into the future.

Project Partners

The Lough Carra LIFE Project is funded by the European Commission LIFE funding programme. The project brings together the experience and knowledge of six partners, including Mayo County Council (MCC), the Department of Agriculture, Food, and the Marine (DAFM), the National Parks and Wildlife Services (NPWS), Coillte, Geological Survey Ireland (GSI), and the Lough Carra Catchment Association (LCCA).



Table of Contents

1. Introduction	7
3. Lough Carra LIFE RBPS programme	15
5. Land eligibility for the Lough Carra LIFE programme.....	19
6. Application procedure	20
7. Selection criteria.	21
8. Lough Carra LIFE farm plan.....	23
9. Agricultural advisor.....	26
10. Participant training.....	27
11. The Lough Carra LIFE programme contract	28
12. Farmer payments.....	30
13. Payment Claims.....	44
14. Lough Carra LIFE programme and avoidance of double payments.....	45
15. Nutrient management, pesticide use, and other activities.....	45
16. Verification of scoring.....	47
17. Verification of payment claims.....	48
18. Payment Adjustments	48



19. Termination of contract.....	49
20. Clawbacks.....	50
21. Programme audits.....	50
22. Rights of entry.....	51
23. Appeals.....	51
24. Force majeure.	51
25. Derogations.....	53
26. Health and Safety insurance.....	53
27. Information and data protection.....	54
28. Further conditions.....	56



1. Introduction

Lough Carra is an exceptionally rare and vulnerable habitat. It forms part of the Lough Carra/Mask Complex SAC, and the Lough Carra SPA, and is one of the finest examples of a Marl Lake habitat in Europe. It is a shallow, predominantly spring fed lake, well known for its turquoise clear waters and the calcareous encrustations on its rocky lake floor and shores. It contains extensive rare charophyte communities, and calcareous microbialite layers, which cover the rocks in parts of the lake and contain large communities of cyanobacteria, diatoms, and invertebrates. The lake shores are fringed with a complex of limestone and wetland habitats, including Limestone Pavements, Orchid rich Grasslands, and Fens, providing homes for a diverse range of key species including the Lesser horseshoe bat, Eurasian Otter, and Common Gull.

Lough Carra is 15.6 km² in area, mostly shallow, with 3 distinct but connected basins fed by small rivers and groundwater from throughout a catchment area of more than 100km². The lake provides a variety of ecosystem services for people within the catchment and beyond, including the provision of drinking water, flood management, tourism, and recreational activities.



Lough Carra has been studied extensively in recent decades by a host of ecologists, universities, state bodies, and other interested groups, and many signs of deterioration have been highlighted:

- Charophyte cover, which is typical of this habitat and indicates clean, oligotrophic lakes, has declined significantly.
- Microbialite crusts, unique to this habitat, have become covered by green algae, causing decline of the microbialite community and disintegration of the crusts.
- Levels of 'Chlorophyll a' in the water has increased.
- Phosphorus and Nitrogen levels have increased.
- Water colour has changed and has become increasingly cloudy.
- Invertebrate populations have declined, especially the once abundant Mayfly.
- Fish populations have changed, with a significant decrease in Brown Trout.
- Invasive species populations, including mink and feral greylag geese, have increased.

Despite its decline, Lough Carra is still one of the most important examples of Marl Lake habitat in Ireland and in Europe.

The Lough Carra LIFE Project will undertake a programme of actions, in collaboration with local farmers, landowners, and community groups, aiming to improve the water quality of the lake, restore the Marl Lake habitat, and raise the conservation status of other habitats and species within the catchment area.

Key actions will include:

1. The development and administration of a pilot Results Based Agri-environment Payment Scheme (RBPS), specifically adapted for farmers in the Lough Carra catchment.
2. A Groundwater study of the Lough Carra catchment, focusing on groundwater/surface water connectivity, and subsequent identification of the full catchment area, to help target nutrient-management measures.
3. The restoration and management of woodlands, wetlands, and drains in the catchment.
4. Habitat enhancement for key species, and controls of invasive species.
5. The purchase of a small area(s) of land on or near the lake shore, for the purposes of demonstration and conservation activities, including wetland construction, habitat restoration, and associated training courses.
6. A monitoring programme of the project impacts.

7. An extensive programme of knowledge exchange, public outreach, and awareness raising.

Central to the project is the pilot Results-Based Payment Scheme, which will reward participating farmers for environmental services, including water quality, biodiversity, and land management, by linking payments to the habitat quality. This rewards farmers for providing public services on their land whilst ensuring the flexibility to farm.

Farmer payments relate to ecological quality for their grassland, waterways, and other habitats. The higher the quality of these habitats, the higher the payment the farmers receive. This approach has the effect of creating a market for environmental services and provides an opportunity and incentive for farmers to manage their farm to deliver better quality habitats. This approach differs from traditional agri-environment schemes (e.g. GLAS) where a flat-rate payment is made independent of environmental quality. The Lough Carra LIFE RBPS will be run by the project team and the project Agricultural Advisor, who will support farmers.

This document sets out the Terms and Conditions of the Lough Carra LIFE Results-Based Payment Scheme. Further information on the administration and operation of the programme is available on the project website (www.loughcarralife.ie). All project related documents and forms will be made available to download from the website or can be requested directly by contacting the project team.

2. Definitions

‘ACRES’ shall mean Agri-Climate Rural Environmental Scheme approved by the European Commission as a measure in Ireland’s Rural Development Programme 2023-2027

‘Agricultural Advisor’ shall mean a person who is Farm Advisory Service (FAS) approved and has been appointed by the Lough Carra Life team.

‘Agreement’ shall refer to this document.

‘Annual Works Plan’ shall mean a document produced by the Agricultural Advisor detailing the actions nominated for the coming year. The document is redrafted annually.

‘Contract’ shall mean the contract between the participant and Lough Carra LIFE). It shall run from the date of receipt by the Lough Carra LIFE of a signed contract annually, until 31st December 2026.

‘DAFM’ shall mean the Department of Agriculture, Food and the Marine and its successors.

‘Farm’ shall mean economic management unit, including all the management units in the state under the control (or part thereof in the case of commonage) of the farmer.

‘Farm Plan’ (also called ‘Lough Carra LIFE Farm Plan’) shall mean a map-based document prepared by the Lough Carra LIFE project team that outlines the extent of the participants farm holding.

‘Farmer’ shall mean an individual agricultural producer, whether a natural or legal person or a group of natural or legal persons (*i.e.* a registered farm partnership) with a single herd number who have submitted a Basic Payment Scheme application in the current year.

‘Farming’ shall include the production, rearing or growing of agricultural products, including harvesting, milking, breeding animals, and keeping animals for farming purposes.

‘Floodplain’ shall mean lands adjacent to the main river channels that are subject to river flooding and contiguous areas of important water course as determined by its stream order.

‘GLAS’ shall mean the Green, Low-carbon, Agri-environment Scheme approved by the European Commission as a measure in Ireland’s Rural Development Programme 2014-2020.

‘ACRES’ shall mean Agri-Climate Rural Environmental Scheme approved by the European Commission as a measure in Ireland’s Rural Development Programme 2023-2027

‘Lease’ shall mean any term of rental agreement on lands occurring within the Lough Carra LIFE target area.

‘Local Advisory Group’ shall mean a group of stakeholders convened to advise the project team on the development of the RBPS. This group will likely be formed in 2023.

‘LPIS’ shall mean Land Parcel Identification System.

‘Management Unit(s)’ shall mean a plot or group of contiguous plots that are managed as a single unit under the Lough Carra LIFE programme, often delineated by a physical boundary.

‘Main river channel’ refers to predetermined stretches of river channel within the target areas as defined by its Stream Order.

‘Natura 2000’ shall mean lands designated under Directive 79/409/EEC and Directive 92/43/EEC (Birds and Habitats Directives).

‘Participant’ shall mean the farmer that is participating in the Lough Carra LIFE programme. This also includes joint herd owners.

‘Priority zones’ shall mean the sub catchments, of the broader Lough Carra catchment area, identified by the project team to be the primary focus of the RBPS programme.

‘Lough Carra LIFE programme’, also referred to as ‘the programme’ shall mean the RBPS programme developed as part of the EU LIFE programme approved by the European Commission and co-funded by

DAFM and Mayo County Council. The programme is administered by the Mayo County Council.

'Lough Carra LIFE team' or 'Project team' shall mean the personnel of the Lough Carra LIFE programme that administer the programme, namely:

- Project Manager
- Agricultural Advisor
- Surface water Scientist
- Hydrogeologist
- Project Administrator
- Community Officer

'Lough Carra LIFE target area' shall refer to the area of lands within the surface water and ground water connectivity to Lough Carra.

'Plot' shall mean an area of land defined by the project team for the purposes of scoring an individual habitat area.

'Plot score' shall mean a score calculated for a plot using the appropriate scorecard for the habitat as developed by the Project Team.

'Project Management Group' shall refer to the group comprising all of the project beneficiaries and other stakeholders.

'Qualifying Interest' shall refer to the species or habitat for which a Special Area of Conservation is designated.



‘Qualifying land’ shall mean land suitable to be scored and considered for payment.

‘SAC’ shall mean Special Area of Conservation.

‘Scorecard’ shall mean a system developed by the Lough Carra LIFE project team and DAFM for assessing habitat quality in different habitats.

‘SPA’ shall mean Special Protection Area.

‘Spread land’ shall mean land that is trafficable by tractor, and which has the capacity to take nutrient or slurry application. The term is used to describe areas utilisable for spreading organic fertiliser (slurry).

‘Transfer’ shall mean the lease or sale or actual inheritance or anticipated inheritance of land.

‘Whole-farm’ shall mean all the units used for agricultural activities or managed by a participant farmer situated within the operational target area catchments.

3. Lough Carra LIFE RBPS programme

The Lough Carra LIFE Project RBPS programme will be focused within the surface water and groundwater catchment area of Lough Carra. For inclusion in the RBPS programme, sites will be prioritised based on their



surfacewater and ground water connectivity to the lake. Priority sub catchments will be identified by the project team, targeting the vulnerability of certain areas within the catchment to nutrient run off. These sub catchments will be the primary focus of the RBPS programme, and will be referred to as priority zones.

The RBPS result will be measured through field assessment and will be delivered by the project team. The Programme will be overseen by a Project Management Group (PMG) with representatives from Mayo County Council (MCC), the Department of Agriculture, Food, and the Marine (DAFM), the National Parks and Wildlife Services (NPWS), Coillte, Geological Survey Ireland (GSI), and the Lough Carra Catchment Association (LCCA). The PMG and the project team will also be informed by a Local Advisory Group comprised of participant farmers.

The delivery of the programme is supported at farm level by two types of payments:

3.1 Results Based Payments

The results-based payment consists of a **Habitat Quality Payment** – for the provision of high-quality natural habitats.

These payments will be adjusted based on the outcome of a whole-farm assessment.

3.2 Supporting Actions Payments

In addition, a **Supporting Actions Payment** is available for actions completed by the farmer aimed at improving habitat quality. A list of

potential supporting actions can be seen in Table 3 (section 12) and other bespoke measures as deemed necessary in the farm plan could also be funded and will be dealt with on a case-by-case basis.

Results-based payments under the programme are made annually and based on the habitat quality delivered by 31st August¹ each year, *i.e.* the latest date for scoring habitats. Payments for supporting actions will be made on an annual basis following declaration of completion of works by the farmer and verification of works completed by agricultural advisor. The programme is independent of ACRES and all payments through the programme are separate from (and in addition to) ACRES payments. Double payment with other schemes will be avoided as outlined in Section 14. All participants must file a BPS/BISS application annually (new entrants must provide a 2023 BISS application).

4. Eligibility criteria and programme requirements

To be eligible to apply to join the programme applicants must be:

- 18 years of age or over on the date an expression of interest is received by the project team.

¹ During 2023, the scoring deadline is 31st August.

- An active herd owner, *i.e.* submit a valid annual application under the Basic Payment Scheme, including the declaration of all lands farmed.
- Farming at least one parcel containing qualifying lands within or partially within the Lough Carra LIFE catchment area (see Appendix I; for notional map of operational areas, detailed maps can be requested from the project team or viewed on the project website - www.loughcarralife.ie).

To participate in the programme, it is also necessary to:

- Agree to abide by the Terms and Conditions as outlined in this document for the duration of the contract.
- Attend training during each year of the programme.
- Attend annual discussion and future planning day with all programme participants
- Maintain records of the delivery of agreed commitments undertaken in the farm plan or annual works plan.
- Facilitate access to lands by the project team including the agricultural advisor and associated contractors at an agreed time.

5. Land eligibility for the Lough Carra LIFE programme.

All farmland within the Lough Carra LIFE catchment area can be considered for payment² with the exceptions of buildings (and their curtilage), extensive water, farmyards, quarries, and commercial forest.

Lands must have been declared on the applicant's current BPS application 2022, or BISS application 2023, to be considered for the programme³. The project team will make use of BPS/BISS data provided by DAFM to determine that those lands are being claimed on by the applicant in the current year of the programme and to avoid the risk of double payments. Participants will provide up-to-date information on their most recent BPS/BISS application and inform the project team of any amendments that are made to their BPS/BISS application.

As required under existing legislation, the farmer shall adhere to the provisions of their Basic Payment Scheme/Basic Income Support for Sustainability, Area of Natural Constraint, and other provisions as required by DAFM, including maintenance of land in Good Agricultural and Environmental Condition (GAEC), compliance with Statutory Management Requirements (SMRs) which includes compliance with Activities Requiring Consents (ARCs) / Notifiable Actions, and ensure that the cross compliance/conditionality standards are fully met.

² Although land may be eligible for the programme, it must be of sufficient quality to attract a payment.

³ BPS land eligibility may not be a factor in determining qualifying land for the Lough Carra Life Project.

6. Application procedure

Entry to the programme will be on a phased basis over the first two years by which time the programme budget is likely to be fully assigned. The initial round of recruitment will take place between March and April 2023 following expression of interest being submitted. Another round of recruitment is likely to commence in early 2024, if budget allows. Farmers that wish to apply to participate in the programme must initially complete and submit the single page Expression of Interest form (Appendix 2, Form LCL F1). The submission of this form authorises the project team to access the applicant's BPS data in order to prepare a farm plan. It also gives consent to the project team to enter onto lands to carry out pre-approval inspections. In the case of joint herd numbers and registered farm partnerships, all persons attached to the herd number or farm partnership number must sign all forms pertaining to the programme.

Submission of Expression of Interest form does not qualify or guarantee acceptance into the programme.

Following a review of the application, successful applicants will be issued with a contract offer (Appendix 3, Form LCL F2) and a Lough Carra LIFE farm plan. This contract offer must be signed by the

applicant and returned to the Lough Carra LIFE project team within 2 weeks of the date on the offer. At this time the successful applicant must also submit a completed bank details form (Appendix 4, Form LCL F3). All unsuccessful applicants will be notified at the end of the recruitment window.

7. Selection criteria.

The selection of participants is based on farm information from the applicant's BPS/BISS application from the previous year. As funding is limited, it may not be possible to accommodate all eligible applicants into the pilot scheme. Participants will be shortlisted based on the criteria detailed below. Unsuccessful applicants that meet the requisite criteria will automatically roll over to be considered at the next phase of recruitment, therefore it is recommended that prospective applicants submit an Expression of Interest at the earliest possible time to increase their chances of being accepted.

Applicants will be ranked by the project team according to the criteria outlined below:

- (1) Land parcels proposed are within the Lough Carra catchment area boundary, as defined by the Environmental Protection Agency (EPA), and the Local Authority Water Programme (LAWPro). The boundaries of this map may be redefined by the project team during the project, based on the results of

investigations into groundwater-surface water connectivity.
See appendix 1.

- (2) Land parcels that fall within priority zones, as defined by the project team. These priority zone boundaries will be made available to all farmers expressing an interest in the programme. The boundaries of these priority zones may be redefined by the project team during the project, based on the results of investigations into groundwater-surface water connectivity.
- (3) Presence of watercourses that connect to priority zones.
- (4) The presence of kart features considered by the project to be relevant to the groundwater-surface water connectivity to the lake.
- (5) Notable presence of features of conservation concern regularly occurring on the lands proposed:
 - a. Habitat with potential to become Annex I (Habitats Directive) if subjected to suitable management.
 - b. Annex II (Habitats Directive) or Annex I (Birds Directive) species present.
 - c. Birds of Conservation Concern (BOCCI) Listed Species present.
 - d. Flora Protection Order species present in reasonable numbers.

Where a farmer has lands both within and outside of the Lough Carra LIFE catchment area, only lands within the catchment will be considered for inclusion in the programme.

8. Lough Carra LIFE farm plan.

8.1 Farm Plans

All approved participants will have a farm plan tailored to their farm which is provided to the participant at no cost. Farm Plans will be drawn up on a farm-by-farm basis, in collaboration between the farmer and Project Team Agricultural Advisor. This will include a desk assessment of the landholding, examining all available layers and identifying any potential nutrient loss pathways and possible measures to address them. The farm plan will also include a field assessment to ground truth the nutrient loss pathway, map additional pathways (e.g. drains) and identify the right measures to be implemented, where measures should be prioritised to reduce nutrient losses, and to check the parcels to identify the suitability for the actions/measures.

The Advisor will consider the risks to water quality, and identify critical source areas on the farm, using the EPA Pollution Impact Potential (PIP) maps for both nitrogen and phosphorus to help identify these areas.

Farm walks, and discussions between the farmer and the project's Agricultural Advisor can verify any flow path or identify where there is

risk of sediment or nutrient losses to a watercourse which will drain into the lake. The farm plan should identify if nitrogen or phosphorus is the pollutant of concern, or if both pollutants are risks on the farm and design the right measures to address the issues.

The Advisor will request copies of the latest soil samples, if none are available will organise for samples to be taken, this cost is covered by the project.

The Advisor will request stock numbers, amount of concentrate fed in the previous year, and the size of slurry tanks, this is in order to draw up a nutrient management plan and a slurry & fertilizer spreading plan as part of the farm plan.

The project team will check actions taken in ACRES to avoid double funding.

Farm plans will consist of:

- Maps of the farm highlighting all areas of relevance, high nature value site, SAC areas, and identifying any potential sources and loss pathways where measures should be prioritised.
- Map of the plots selected for the Results based payment.
- Nutrient management plans with soil sample maps.
- Details of all supporting actions
- Whole farm Assessment and scores of results-based plots

Each farm plan will be unique to each farm, and so may include further content, such as:

- Map of linear actions, e.g., Riparian buffer strips/field margins.
- Drain Management plan.
- Stocking rates and grazing regimes
- Scrub, grassland, and rush management
- Adjustments to the current management regime
- Bespoke measures for the farm

In the case of results-based aspects of the plan, payment will reflect the condition of the habitat managed by the participant and while advice can be given to achieve higher scores, the advice is not a ‘prescription’ to follow; it is ultimately in the plan participant’s gift as to how s/he wishes to deliver habitat condition.

Compliance with the Farm Plan does not excuse the participant from compliance with the requirements of cross compliance obligations and Nitrates Directive Regulations and participants should be mindful of their requirements in relation to Statutory Management Requirements and Good Agricultural and Environmental Condition requirements.

8.2 Annual works plan

In addition to the overall farm plan, all participating farmers will be invited to draw up, in consultation with project farm advisor, an annual works plan; this will be prepared each year by the project’s advisor. The annual works plan will include details on supporting actions to be undertaken on the farm with the aim of helping the farmer achieve a higher environmental score in future years. This annual plan shall be

submitted by the advisor to the project team. The annual works plan will include the following information:

- Map showing location of all planned works for that year in relation to the farm plots.
- Details of the proposed actions including quantities, methods, unit costs, funding rates, and any consents/legal requirements.

The annual works plan is intended to set out a clear plan of action for the farm and may be re-drafted annually. The plan is submitted to the project team for approval. Any amendments requested by the project team will be agreed with the farmer and the project advisor.

9. Agricultural advisor

On accepting a contract offer all participating farmers will work with the project agricultural advisor. The Lough Carra LIFE Agricultural Advisor is a member of the Project Team and is Farm Advisory Service (FAS) approved.

The advisor will work closely with the farmer and the project team. The main responsibilities of the advisor include:

- Design of the farm plan.
- Review of overall farm plan.
- Annual scoring of habitats.
- Annual whole-farm assessment.

- Annual submission of results of habitat scoring and whole-farm assessment.
- Providing support and advice to farmers to maximise their results-based, and whole farms assessment scores.
- Drafting and submission of annual works plans.
- Verifying of works completed for supporting actions.

10. Participant training.

All participants are required to attend all relevant, to their farm plan, training courses in each year of the programme. Where the farmer is unable to attend, they must nominate in writing a named representative to attend on their behalf. A representative can only be used in exceptional circumstances and cannot be another participating farmer. Non-attendance at training will lead to a 10% reduction on all payments in that year. Where demand exists, specialist courses may be provided to selected participants on topics such as control of invasive plant species and bog reactivation. The project team may hold additional voluntary workshops for participants throughout the programme duration, depending on demand.

11. The Lough Carra LIFE programme contract

The Lough Carra LIFE project, and all aspects of the project, are subject to change in response to participant feedback and programme monitoring.

Parties to the Contract. The Lough Carra LIFE programme contract is between the Lough Carra LIFE project and the participating farmer.

Contract Offer. The project team will review and select applicants on a periodic basis during the recruitment windows. Successful applicants will be offered a contract. This must be signed by the applicant and returned to the project team within two weeks of the offer being made.

Lapse of Contract Offer. If the official signed contract offer is not received by the Lough Carra LIFE project within two weeks of being issued, the offer will lapse. The applicant is free to apply again but a further contract offer cannot be assured.

Contract Duration. The contract shall run from the date that a signed contract is received by the project team, provided full adherence to these Terms and Conditions, until 31st December 2026, unless the Lough Carra LIFE programme team and both parties are agreed on any proposed extension to this period.

Transfer of Contract. The contract is non-transferable, except in cases where the entire farmed area relevant to the programme is transferred to a new owner. In these cases, the new owner may opt to continue with the contract. Should part of the holding be transferred to another party, the transferee has no automatic right to participate in the programme and an application to do so must be made to the project team for approval.

Adding Land to Contract. Where an existing participant buys or leases or rents additional land within a Lough Carra LIFE target area during the term of the contract, then the lands can be included in the programme and added to the farm plan. The land details will be cross checked against the participant's most recent BPS/BISS application. Only land included in the most recent BPS/BISS can receive payment.

Removing Lands from Contract. All farmland within the Lough Carra LIFE target area under the control of the participant are included in the programme. Any reduction in land should be notified to the project team and subsequently be removed from the farm plan. There will be no clawback of payment on land reduction.

Leased Land. Farmland leased by participants that occur within Lough Carra LIFE target areas will be included in the programme and treated the same as owned farmland.

Withdrawal from Contract. The participating farmer is free to withdraw from the contract after one month's notice in writing to the project

team. No further payment claims will be considered after the receipt of this notification.

Termination of Contract. The contract may be terminated by the project team in the event of serious over-claims or fraudulent claims for payment.

Abandoned Contracts. If the participant has not submitted a claim for payment or an annual works plan by December 31st each year, the contract may be deemed as abandoned. An abandoned contract may be terminated after one month's notice in writing to the participant and to the advisor.

12. Farmer payments

Farmer payments will be made directly to the farmer's bank account by the project team. The regulations that govern the operation of the Lough Carra LIFE programme do not permit direct area-based payments in the same manner as more traditional agri-environmental schemes.

Participating farmers have the opportunity of two main payment strands as follows:

(1) Results-based payment

These are habitat quality payments, for the provision of high quality habitats.

These payments will be adjusted based on the outcome of a whole-farm assessment.

The results-based payments are calculated based on the quality of terrestrial habitats as defined by a score achieved at the plot level. These payments are then subject to an adjustment based on the outcome of a whole-farm assessment and the potential risks to the wider environment. On critical sites, the project team may develop a customised scoring system based on the characteristics and value of the site.

(2) Supporting Actions Payments

Payment for measures as agreed with the project team and completed by the farmer aimed at improving habitat and water quality. Supporting actions maybe an annual payment e.g riparian buffer strip, or a one-off payment depending on the farm plan e.g nose trough.

12.1 Results-based payment

12.1.1 Habitat quality payment

These payments are made to farmers based on habitat quality at the plot level. Habitat quality relates to specific environmental goals which reflect habitat condition, landscape value/richness of biodiversity, soil health, and water quantity and quality.

The quality of three overall farm habitats in each Lough Carra LIFE target area (grassland, peatland, and semi-natural scrub/woodland) influences the quality of the surface water in the catchment. Habitat

quality will be assessed using a scorecard for each plot. Higher scores reflect higher quality, and higher payments.

The scoring system is quality-based on a scale of 0 to 10. Where a plot scores 0 to 3, this will not receive a payment, regardless of area. The payment scale (Figure 1) increases in varying steps from a score of 4 to the maximum payment rate for a score of 10. All plots can progressively increase their environmental score and associated payment over the lifetime of the farm plan. The top payment of 10 will only be achieved where the habitat is considered to be in optimal condition and therefore deserving of highest payment for delivering environmental benefits.



Figure 1: Lough Carra LIFE Payment Scale

Payment rates vary across two area bands, with quality based payment rates declining as farm area increases: 0-30 ha, >30 ha (see Table 1). In calculating results-based payments, the lowest scoring lands will be paid at the higher payment bands. This adds a strong incentive to

improve lower scoring lands as any increase in habitat quality (score) will be paid at the highest rate.

Plot Score	Payment rates according to quality per ha (€)
<4	0
4	150
5	175
6	205
7	250
8	300
9	350
10	400

Table 1: Payment rates according to quality per ha (€)

There will be a **maximum limit of €10,500.00** made available to any single farmer in the scheme. This limit will include both results-based payments and supporting actions payments.

12.1.2 Whole-farm payment adjustment

Each farm is subject to a whole-farm assessment (of environmental quality). This result is used to determine the final results-based payment to the farmer. Three assessments are considered:

- Farmyard management identifies any risks related to environmental issues such as inadequate storage facilities, leaking oil tanks and inappropriate facilities.
- Farm nutrient balance assesses the volume of slurry generated in relation to the availability of suitable spread lands.
- Watercourse condition assesses all watercourses in relation to risks arising from flow, livestock, sediment, and nutrients.

Each of the three assessments are allocated a score ranging from 0.3 (poor) to 1.2 (excellent). The result of the whole-farm assessment is the lowest score (0.3, 0.6, 1 or 1.2) achieved in any individual category (Table 3). The final habitat quality score is multiplied by the whole-farm assessment result to determine the results based payment each farmer will receive.

Whole-farm assessment result:	
Quality	Correction factor
Poor	0.3 – 30% of the potential results-based payment is awarded
Inadequate	0.6 – 60% of the results-based payment is awarded
Good	1 – 100% of the results-based payment is awarded
Excellent	1.2 – a bonus of 20% is applied to the results-based payment

Table 2: Whole-farm pathway assessment and correction factors applied to total result-based payment.

12.1.3 Calculations of results-based payment

Habitat quality is assessed using a specifically designed scorecard and each plot is awarded a score between 0 and 10. All farm plots are ranked according to field score in increasing order. Therefore, lowest ranking plots are paid at band A rates for the first 30ha and subsequent area paid at band B rates respectively, where relevant. The

35

habitat quality payment is then calculated by multiplying area of lands by the corresponding payment rate as per figure 2 below.

In order to calculate the final results-based payment, the total of the habitat quality payment is adjusted according to the whole-farm assessment result.

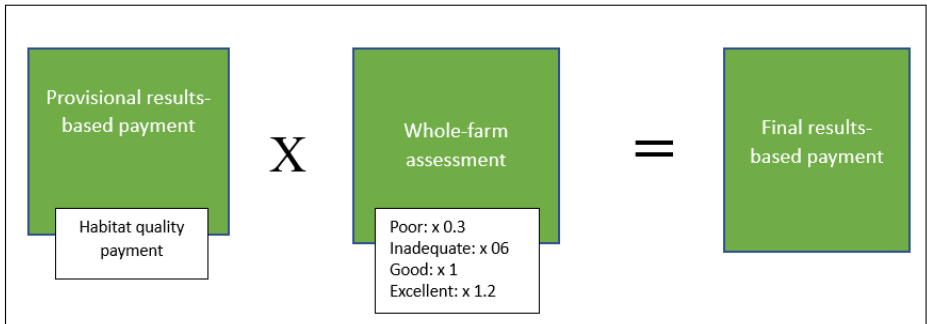


Figure 2: Application of whole-farm assessment in calculating final result-based payment.

12.2 Supporting actions payments/linear & numerical actions

Supporting actions are voluntary measures that a farmer may choose to undertake with the aim of improving habitat quality. Where a farmer (or group of farmers) wishes to carry out supporting actions, additional funding is available. Typical supporting actions that will be funded by the programme are fencing, invasive species control, livestock drinking facilities. The project team will consider funding

36

other actions that are likely to help meet the project aims, subject to value for money and the necessary consents being in place. Administrative approval for supporting actions is required prior to works commencing. Supporting actions are subject to specifications related to each individual action. Payment for actions are made following declaration by the participant that the works have been delivered.

12.2.1 Linear/Numerical actions.

These actions are additional actions that the farmer may include in his farm plan. These actions typically include tree planting, riparian buffer strips and zones, etc. Linear/Numerical actions are subject to specifications related to each individual action. Payment for actions are made following declaration by the advisor annually that the works have been delivered and remain in place for the duration of the contract.

ACTION	Widths, Minimum, Maximum	Payment rate	Completion deadline
<i>Grass margins _ Grassland</i>	<i>2 m</i>	<i>€1.00/m/yr</i>	<i>In place within 3 weeks of contract date.</i>
	<i>3 m</i>	<i>€1.10/m/yr</i>	
	<i>6 m</i>	<i>€1.37/m/yr</i>	

<i>Low emission Slurry spreading</i>	<i>50m³ minimum Imported slurry not allowed</i>	<i>€1.20/m³/yr</i>	<i>Completed signed LESS form required annually</i>
<i>Low input grassland (results-based)</i>	<i>0.25 ha to 10 ha</i>	<i>Results-based up to €400/ha/yr</i>	<i>Scored annually</i>
<i>Low Input peat grassland (results-based)</i>	<i>0.25 ha to 10 ha</i>	<i>Results-based up to €400/ha/yr</i>	<i>Scored annually</i>
<i>Planting a new hedgerow</i>	<i>10m – 750 m</i>	<i>€5.29/m/yr</i>	<i>In place by 31/03/2024</i>
<i>Riparian buffer strips - Grassland*</i>	<i>1.5m</i>	<i>€1.30/m/yr</i>	<i>In place 3 weeks after signing of contract</i>
	<i>3m</i>	<i>€1.71/m/yr</i>	
	<i>6m</i>	<i>€2.11/m/yr</i>	
<i>Riparian buffer zone</i>	<i>0.04ha- 2ha</i>	<i>€1242/ha</i>	<i>In place 3 weeks after signing of contract</i>
<i>Pasture pumps</i>	<i>Minimum of 1 pump, max of 6 pumps</i>	<i>€300.00 each</i>	<i>Within 4 weeks of contract signing</i>
<i>Tree planting</i>	<i>10 tree – 300 trees</i>	<i>6.21/tree/yr</i>	<i>31/11/2023</i>
<i>Tree planting in a buffer zone</i>	<i>10 tree – 200 trees</i>	<i>3.18/tree/yr</i>	

<i>Micro forests – 100m²</i>	<i>150 trees – 250 trees</i>	<i>6.21/tree/yr</i>	<i>31/12/2023</i>
<i>In channel ponds of nutrient and silt settlement</i>	<i>100m</i>	<i>€500/100m/yr</i>	<i>31/11/2023</i>
<i>Cover for FYM heaps</i>	<i>Heavy Duty Silage Cover 60ft x 80ft</i>	<i>€305/cover</i>	<i>4 weeks after signing of contract.</i>
<i>Biochar filter bags in channels drains from Farmyard</i>	<i>5 bags to 20 bags</i>	<i>7.00/bag</i>	<i>31/11/2023</i>
<i>Ponds</i>	<i>100m²</i>	<i>€750/100m² /Yr</i>	<i>28/02/2024</i>
<i>Nutrient mgt plans Soil samples</i>	<i>Compulsory</i>	<i>Soil samples – 1 per 5 ha, €28.50/sample NMP - €66.02</i>	
<i>Slurry sampling Silage analysis</i>	<i>€14.06/sample and analysis – to be done on farm €35/sample recommended 1 per silage cut.</i>		
<i>Nutritionist to plan diet to reduce crude protein</i>	<i>as per farm</i>		
<i>Nutritionist to plan diet to reduce crude protein.</i>	<i>costing as per individual farm, using stock numbers</i>		
<i>*Following the contours of the river, buffer strip to be design with farmer.</i>			

Table 3 All actions, Results based, linear actions & supporting actions.

There will be a **maximum limit of €10,500.00** made available to any single farmer in the scheme. This limit will include both results-based payments and supporting actions payments.

12.2.2 General Conditions

The farmer, supported by the advisor, may propose supporting actions to be submitted to the project team by the end of each year. Following approval by the project team, these actions form the annual work plan to be implemented by the farmer in the following year. Associated payment will be issued on satisfactory completion.

The participant must follow the requirements and guidance provided in the specifications document when completing supporting actions.

The participant declares that the works have been completed at any time during the year but cannot be made after the end (December 31st) of the following year. Non-completed works may be withdrawn/held over and submitted in the following year's work plan.

12.2.3 Rate of Support.

The project team will co-invest with the participant in the provision of infrastructure that enhances the farmer’s capacity to deliver environmental benefits. Support for these actions ranges from 25-50%. Support for actions that directly enhance habitats which support the target objectives of Lough Carra LIFE and have little or no direct agricultural benefit may be 75 or 100% funded by the programme subject to the overall cap on funding for actions. Sample supporting actions and the rate of support is provided in Table 4.

Supporting action category	Example actions	% Funding	Rationale
<i>Environmental benefits with little agricultural benefit</i>	<i>Drain blocking, biochar filter bags, settlement ponds, water retention measures, earth banks and soil bunds, riparian strips/zones, hedgerow planting and maintenance, tree planting, grass margins.</i>	100%	<i>These actions have little direct agricultural benefit and will generally be new actions to the farmer</i>
<i>Actions with benefits to reduce nutrients</i>	<i>Nutrient management plan¹ Soil samples² Slurry analysis Silage analysis</i>	100%	<i>These actions should lead to reduction of nutrients used on farm, reducing the</i>

			<i>nutrient load to the lake.</i>
<i>Actions with benefits to reduce nutrients</i>	<i>Low emissions Slurry spreading³</i>	<i>€1.20/m³/yr</i>	<i>Reduces phosphorus runoff. Using low emission technology improves the utilisation efficiency of slurry compared to the traditional splash-plate.</i>
¹ <i>Complusory</i> ² <i>Compulsory</i> ³ <i>Cannot be taken as action if already taken in ACRES</i>			

Table 4: Rate of support for Supporting Actions.

12.2.4 Screening and approval of proposed works.

Works must not commence until administrative approval is issued from the project team. This is required to ensure that proposed actions can be evaluated for their suitability and checked against potential for

double payment. Where necessary/possible, the project team will assist the participant with obtaining required consents from regulatory bodies. However, it remains the applicant's responsibility to ensure that required consents are in place before work commences. All annual works plans will be subject to assessment before approval, and this may include a site visit. The project team may refuse, attach conditions, or modify a proposed action if:

- It is considered that the proposed action would not deliver worthwhile environmental benefits.
- The proposed action could cause damage to an existing habitat or present a risk of disturbance to a habitat included in the Lough Carra LIFE programme or other protected habitats or flora or fauna species.
- The proposed action could cause damage to an archaeological site.
- The proposed action could be damaging to a Natura 2000 site, Natural Heritage Area, or proposed Natural Heritage Area site.
- The proposed action is inappropriate for the site.

Payment for actions will be made following declaration by the participant that the works have been delivered and subject to verification by agricultural advisor.

Retention of Co-funded Infrastructure. Generally co-funded infrastructure must be kept in place for the remainder of the contract unless prior written consent has been given by the project team for its removal.

The list of supporting actions is likely to evolve over the term of the programme. In line with the locally adapted and innovative ethos of the programme, the project team will consider funding additional bespoke actions beyond those listed in the specifications document. These may, if appropriate exceed the annual allowance outlined above. Such proposals must be based on comprehensive estimates of labour and material costs and would need to demonstrate a high likelihood of positive environmental benefits.

13. Payment Claims

13.1 Supporting actions payment claim

To claim payment for supporting actions, participants must complete a declaration of completed actions confirming all works were completed by that date. False declarations may result in expulsion from the programme. Supporting action payment claims may be submitted at any time of the year on completion of works. Farmers are encouraged to only make one claim per year.

Payments will only be made when tasks have been completed to an acceptable standard, as listed in the supporting actions guidelines, and addressed at farmer training. Failure to complete a task to an acceptable standard may result in some or all of the payment for that task being delayed, withheld or if necessary recouped. Payment will be paid annually, usually at the same time as the results-based payments.

14. Lough Carra LIFE programme and avoidance of double payments.

It is envisaged that many of the programme participants will also be participating in existing agri-environmental schemes. To avoid the risk of double payments, the project team will examine the participants' ACRES plan, to ensure that different parcels are used for the RBPS. Prior to any supporting actions being approved, the potential for double payment against ACRES measures (such as riparian margins) is assessed.

15. Nutrient management, pesticide use, and other activities.

The extent of lands available for spreading organic fertiliser (slurry) is a significant constraint within Lough Carra LIFE target areas. The practice of housing livestock over the winter period gives rise to significant volumes of slurry which, given the prevailing nature of the farmland, can only be spread on a small portion of the farm. These spread lands,

which are often near the main river channels, can receive large quantities of slurry, which can therefore pose a significant risk to downstream water quality.

The volume of slurry generated in relation to the availability of suitable spread lands will influence the whole-farm score.

Due to the sensitivity of many target habitats and species under the Lough Carra LIFE programme to the presence of pesticides and in order to maintain species diverse habitats, pesticides are not permitted, except for spot treatment of noxious and invasive weeds (subject to specialist training) and rushes. Where present, rushes can be controlled either mechanically, by weed wiping and/or by spot spraying. **A minimum buffer zone of 5 m** should be maintained from all watercourses. Weed wiping and/or spot spraying can take place throughout the year, although we recommend that the topping of rushes should not be carried out between 15th March and 1st July to avoid the potential of disturbing nesting birds. It should be noted, where pesticide use has affected the flowering plants and herbs in a field, this will reduce the plot's score and result in a lower payment on that plot. Non-chemical control methods should be used as far as possible to control rushes.

Any significant risks of sheep dipping operations on the farm will be captured on the whole-farm assessment. In the case where there is a high risk to water quality then farmers will have the option to avail of supporting actions to reduce or eliminate this risk.

The process of grassland reseeding within the target areas has the potential to negatively impact aquatic habitats and species receptors. This activity is likely to result in a decreased payment to the farmer.

Insertion of new drainage and drain clearance can negatively impact aquatic habitats and species receptors due to increased flow and potential sediment and nutrient losses to watercourses. These activities may result in a decreased payment to the farmer.

Several of the activities listed above, including the use of pesticide, grassland reseeding, drainage, etc., may require administrative approval outside of the Lough Carra LIFE project, e.g., planning permission.

16. Verification of scoring

The project team will make use of BPS/BISS data provided by the Department of Agriculture, Food and The Marine to determine that lands on which payment is claimed are being farmed by the applicant in the current year. The project advisor aims to verify the scores of each participant in their first year of the programme to ensure an accurate baseline level.

Timing. Field verification surveys or audits by the project team can be carried out at any time during the year.

Notice. The project team will attempt to notify the participant in advance of the field visit.

Habitat Assessment. The habitat quality score is based on the habitat found on the date of the field visit. If the habitat is damaged due to burning, land improvement or other factors this will reduce the score.

17. Verification of payment claims

Payments will be made by electronic funds transfer directly to the participant's bank account.

Payments will be made once administrative checks (including on site verification of claims) are complete.

The payment process in respect of results-based payments will commence in the Autumn/Winter of each contract year and payment will be paid by year end.

To facilitate the issue of payments, the participant must inform the project team of their banking details and any changes to these throughout the contract. This can be done by completing the bank details form (Appendix II, form LCL F3).

18. Payment Adjustments

Payment adjustments will apply in the programme in respect of:

Attendance at Participant Training. Non-attendance at training will result in a 10% reduction on all payments in that year. Payments for those that miss training in year 1 and year 2 of the programme will be reduced by 20% in year 2.

Where the participant claims payment on actions that are not delivered or are only partially delivered, the payment will be based on the value of the completed actions, less the over claimed amount. This correction can be applied to any payment due to the participant.

19. Termination of contract.

Contracts will be terminated where the project team find intentional and serious breaches of the Terms and Conditions of the programme. Intentional and serious breaches can include, but are not limited to, any of the following: intentional damage to the habitats associated with the participatory farms, intentional damage to other protected habitats, drainage of wetlands, or disturbance to other protected habitats or species. In cases of fraudulent, serious, or repeated over claims for payment, the project team can terminate the contract.

After one months' notice in writing to the participant, the project team may terminate an abandoned contract.

20. Clawbacks

Overpayments to a participant, irrespective of cause will be recovered from future payments. If an action is paid on and it subsequently becomes clear that the action was not delivered or not kept in place for the duration of the contract, the sums paid out will be deducted from future payments.

21. Programme audits

EU LIFE audit.

The Lough Carra LIFE project team may be subject to audits and controls from the EU LIFE programme, which may include administrative and on-farm inspections. These are solely to provide checks of the project team, ***not the farmer.***

Biodiversity Audit.

Participating farms may be selected for an independent biodiversity audit in any year of the programme. This would be carried out by an independent expert external to the project. These audits are to inform the development of the project and for reporting purposes. They are independent of the habitat quality verification process and will have no impact on payments.

22. Rights of entry.

Participants also confirm the right of the project team to make such visits to their lands as are necessary for the administration and monitoring of the programme. The project team will attempt to give reasonable notice to participants before visits.

23. Appeals

Participants have the right to appeal a decision made by the project team. The appeal procedure is a two-stage process. Where the participant wishes to appeal a decision of the project team, the participant must request that the project team undertake a review of the decision within two months of the date that the participant was informed of the disputed decision. The first stage of the appeal process is a re-examination of the issue by the project team. Following this, if the participant is not satisfied with the outcome of the review, they may choose to make a formal appeal to an Appeals Commissioner who will be appointed to consider formal appeals.

24. Force majeure.

Where a participant is unable to continue complying with the commitment(s) given for reasons beyond his/her control, a case may

be made under force majeure and the respective payment shall be proportionately withdrawn for the relevant year(s). Reimbursement of support paid in previous years shall not be required and payment may be continued in subsequent years.

The participant, or a representative of their estate must notify the project team of cases where force majeure is claimed within 10 days of being able to do so. Without prejudice to the actual circumstances to be taken into consideration in individual cases, the following categories of force majeure may be recognised:

- Death of the participant.
- Long term professional incapacity of the participant.
- Expropriation of a large part of the holding if such expropriation could not have been anticipated on joining the programme.
- A natural disaster affecting the holding's agricultural land.
- The accidental destruction of livestock buildings on the farm.
- An outbreak of disease affecting all or part of the livestock on the farm.
- The disposal or vacation of land to satisfy a court order or legal settlement in cases of marital breakdown.

A participant has the right of appeal of the decision of the project to an Appeals Commissioner who will be appointed to consider formal appeals.

25. Derogations.

Terms and Conditions. Derogations from these Terms and Conditions will only be granted in exceptional circumstances. An application to the project team for a derogation must be made in advance and in writing and must establish that a variation of the normal procedures would in the exceptional circumstances of the case delivering an environmental benefit.

Specifications. Applications for a derogation from the specifications for a supporting action must be in writing and must accompany the annual works plan requesting approval for that action.

26. Health and Safety insurance.

Works may, at the discretion of the farmer, be carried out to maintain or improve the score of management unit(s) of land entered into the programme. If any or all of the work is being undertaken by a farmer, then he/she should seek competent advice in relation to the safety of the actions and the personnel undertaking the actions on the farmer's behalf. Certain construction dangers may be encountered in the course

of completion of actions by farmers. Neither the programme, nor any member of the project team will be in any way liable for any damage, loss or injury to persons, animals or property in the event of any occurrence relating to the actions.

27. Information and data protection

27.1. Processing by the Contractor

27.1.1 Subject matter of processing

The processing of personal data pertaining to farmer participants and farm advisors in the RBPS administered by Lough Carra LIFE is the subject matter.

27.1.2 Nature of processing

The nature of the data processing is in the management, administration, and promotion of the Lough Carra LIFE RBPS. This includes geographical analysis, eligibility checking, double payment inspection, plot scoring, recording, and assessing supporting actions, and facilitating payment under the RBPS. The exchange of data with DAFM on individual farmer payments will be necessary to avoid the risk of double payments.

27.1.3 Purpose of processing

The processing is required for the purpose of administering and promoting the Lough Carra LIFE RBPS; to check eligibility for participation in the same; and to facilitate correct payments under the Lough Carra LIFE RBPS. There will be no processing of the personal data for any purpose other than that for which it was collected.

27.1.4 Duration of the processing

The personal data itself is retained by Lough Carra LIFE as long as it is necessary for the purposes for which it was collected and processed. In line with legislative and business requirements, the data retention period in this instance is fourteen years.

27.2. Types of personal data

The following personal data will be processed in respect of the Lough Carra LIFE RBPS under this contract:

- LPIS data, in a pseudonymised format, containing a holding identifier and attributes on crop description, commonage details and indication of other farm payment schemes. Re-identification data matching the LPIS data with the correct farm (once an expression of interest has been made in taking part in the Lough Carra LIFE RBPS).
- Personal data provided by the farmer participant (a data subject); specifically their name, postal address, telephone number, email address, herd number and bank account details.

- The name and contact details for the farmer’s nominated farm advisor (another data subject).

27.3. Categories of data subject

Lough Carra LIFE will process personal data pertaining to:

- Farmers participating in the Lough Carra LIFE RBPS; and
- Agricultural advisor collaborating with each farmer participant and with Lough Carra LIFE

A Privacy Statement is available to view on the Lough Carra LIFE website and on request.

Lough Carra LIFE reserves the right to use anonymised scientific data for recording, research, and training purposes.

Lough Carra LIFE reserves the right to take photographs or video images from participant’s farms for claims verification, monitoring, research and training purposes and project publicity.

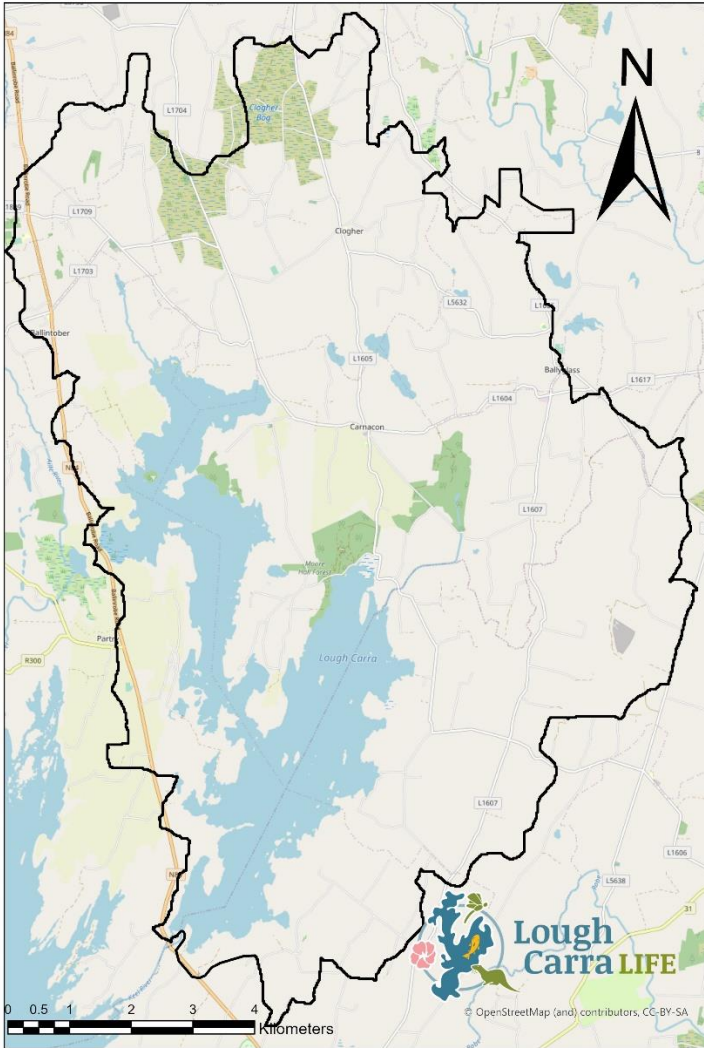
28. Further conditions

Lough Carra LIFE may amend, expand upon, explain, interpret or define the meaning of any aspect of the Terms or Conditions of the programme. Any such amendment will be published on the Lough Carra LIFE website and participants and advisors notified.

Participants are responsible for their own actions and the actions of contractors and others involved in the provision of services to them or involved in carrying out works on their farm.

Appendix 1: Catchment map





Appendix 2: LCL_F1_EOI



LIFE20 NAT/IE/000172





Results Based Agri-environmental Payment Scheme

Expression of Interest form

To express your interest in participating in the Lough Carra LIFE RBPS, please read the project information booklet and fill out your details below. Please return the completed form by post to: Aisling Burke, Mayo Co. Co., Castlebar, Co Mayo or via email to aburke@mayococo.ie. The closing date is 7th January 2023.

- I wish to express my interest in joining the Lough Carra LIFE RBPS programme (LIFE20 NAT/IE/000172 under the Life Regulations (EU) No 1293/2013).
- I authorise the Lough Carra LIFE Project team under the Department of Agriculture Food and the marine (DAFM), to access my herd number, land parcel information and payment scheme participant from DAFM records in order to administer the Lough Carra Life RBPS programme.
- I understand the data collected for this purpose will be held securely by Lough Carra LIFE as long as there is a business need to do so, in line with the purpose(s) for which it was collected. The Privacy Statement on the projects website provides more detail.
- The data provided for this purpose is being requested in order that an assessment of eligibility for participation in the Lough Carra LIFE programme can be made. If I choose not to provide the consent I understand that my application for the Lough Carra LIFE programme cannot proceed.
- I have read the project information booklet and understand that there is no guarantee that a contract offer will be made in response to this expression of interest.

Please use BLOCK CAPITALS when completing your details below.



Names: _____

Phone: _____

Address: _____

Herd number: _____

Email address: _____

Appendix 3: LCL_F2_Contract Offer



LIFE20 NAT/IE/000172





Lough Carra LIFE
Belcarra Community Centre
Belcarra Co Mayo
www.loughcarraLIFE.ie

Lough Carra LIFE RBPS Contract

Date of offer: _____

Name: _____

Herd number: _____

Your application to the Lough Carra LIFE RBPS programme has been successful. If you wish to partake in the programme you must sign and return this contract Aisling Burke, Mayo Co. Co., Castlebar, Co Mayo., in the enclosed stamped address envelope by _____. This contract is between you and Lough Carra LIFE and runs from the date this signed form is received by Lough Carra LIFE until 31 Dec 2023. An enclosed farm plan has been prepared for you which outline the basic requirements for your participation in the programme. You must also agree to abide by the Lough Carra LIFE RBPS, Terms and Conditions for the duration of the programme.

I wish to avail of this contract and be accepted into the Lough Carra LIFE RBPS Programme.

I agree to:

- Attend annual training
- Authorise Lough Carra LIFE RBPS to enter my land for monitoring and verification purposes
- Authorise Lough Carra LIFE RBPS to access land parcel data relating to my farm held by the Dept of Agriculture, Food, and the Marine.
- Comply with the requirements of the of the lough Carra LIFE RBPS Programme as detailed in the Terms and Conditions.

To the best of my knowledge, all details on the enclosed Lough Carra Life RBPS farm plan are correct and I agree to the management objectives of the farm plan.

61



LIFE20 NAT/IE/000172



Office use only

Received:.....

ID:

Signed:

Date:



Appendix 4: LCL_F3: EFT Mandate form



EFT Mandate Form

I hereby authorise that all payments due from Lough Carra LIFE RBPS be paid to the bank/credit union detailed below.

PRIVACY STATEMENT

Lough Carra LIFE RBPS is committed to protecting and respecting your privacy and employs appropriate technical and organisational measures to protect your information from unauthorised access. Lough Carra LIFE RBPS will not process your personal data for any purpose other than that for which they were collected. Personal data maybe exchanged with DAFM, other Government Departments, local authorities, NPWS, Coillte and other public bodies, in certain circumstances where this is provided for by law. Lough Carra LIFE RBPS will only retain your personal data for as long as it is necessary for the purposes for which it was collected and subsequently processed. When the business need to retain this information has expired, it will be examined with the view to destroying the personal data as soon as possible, and in line with Lough Carra LIFE RBPS policy. The Lough Carra LIFE RBPS Privacy statement and further information on Data Protection can be found on our website at: <https://www.loughcarralife.ie>.

Supplier Details

Suppliers/Grantee Name: _____

Supplier/Grantee Address: _____

Please include Eircode: _____

Telephone Number: _____

Contact Name: _____

Tax Reg. or PPS Number: _____



Charity Reg Number: _____

Bank Account Details

Name (s) of Account															
Bank/Credit union name															
Bank/Credit union address															
Bic/Swift code												I	E		
IBAN Number (below)															
I	E														
Credit Union Account No: (only to be completed if account is in a credit union)															
Remittance notification email address															
E-Mail Address															

NOTE – It is important that a generic email address is used if possible so that payment notification messages can be seen by all relevant personnel.

Authorised by
On behalf of
Supplier:

DATE:

Accounts section use only	
Entered by:	
Checked by (EO/HEO)	
Date:	/ /2023



Appendix 5: LCL4 – Data consent form



Lough Carra LIFE Project - Data Sharing Consent Form
Results Based agri-environmental Payment Scheme (RBPS)

Farmer name: _____

Address: _____

Phone: _____

Herd Number: _____

Farm Planner (Advisor) details:

Name: _____

Company: _____

Phone: _____

Email: _____

- I authorise the Lough Carra LIFE Project Team to contact and receive information from my Farm Planner relevant to the creation of the Lough Carra LIFE farm plan.



- I understand that the data collected for this purpose will be held by the Lough Carra LIFE Project for as long as there is a business need to do so, in line with the purpose(s) for which it was collected.
- The data provided for this purpose is being requested in order that an assessment of eligibility for participation in the Lough Carra LIFE Project can be made. If I choose not to provide this consent, I understand that my Expression of Interest for the Lough Carra LIFE Project may not proceed.
- I agree to the above terms and conditions and understand that there is no guarantee that a contract offer will be made in response to providing this information.

Signature: _____

Date: _____



Appendix 6: Layout of a Lough Carra Life Plan.

1.	A cover letter listing all the contents enclosed and contact details of the farm advisor/project team
2.	Description of the harm, the different habitats, SAC/SPA, type of farm, beef/sheep/dairy/equine/mixed. Size of farm and number of plots. Eircode and location of farm.
3.	Farmyard sketch, including size and location of slurry storage/farmyard manure pit.
4.	Maps: <ul style="list-style-type: none">• Plots for Results based scoring• Drains, rivers, watercourse, ponds, and wetlands.• Linear actions map
5.	Nutrient management plan, proposed spreading dates, maps of parcels soils sampled with indexes colour coded, land spreading map.
6.	Score cards used, with plot identifier on each card
7.	Supporting actions list and map
8.	Whole farm assessment and score